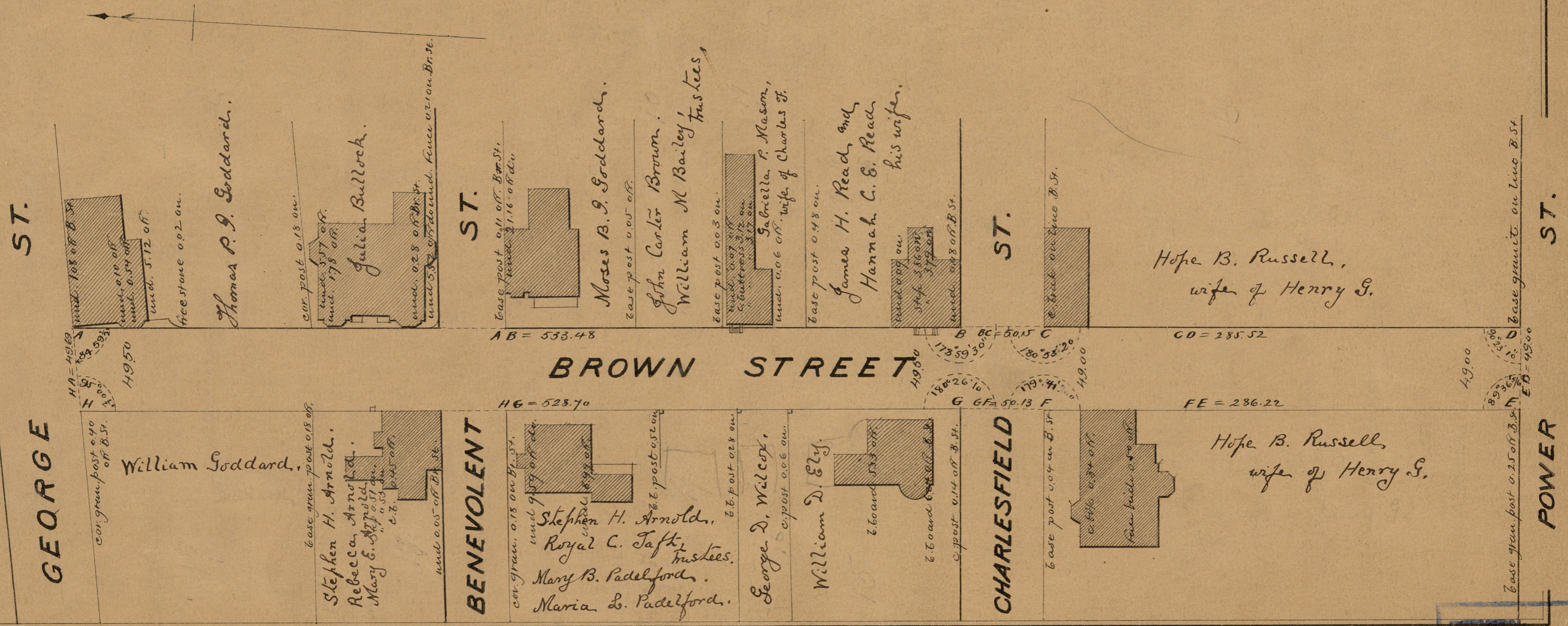


PROVIDENCE, R. I.  
CITY ENGINEER'S OFFICE  
STREET LANE DEPT.

May 10, 1889  
015003

Providence R.I.  
This plat accompanies  
our report of this date

# PLAT OF BROWN STREET FROM GEORGE ST. TO POWER ST. SCALE 60 FEET PER INCH



OFFICER 10021  
DRAWER 83  
SHEET B-88

83  
B-88